



Joining the Perisher Ski Patrol - Overview

Thank you for your interest in joining the Perisher Ski Patrol (PSP). The Perisher Ski Patrol is a volunteer organisation that assists injured skiers primarily in the Perisher, Blue Cow, Simiggin Holes and Guthega areas. The PSP is registered under the State Emergency Plan to provide rescue and first aid services, and is a member of the NSW Volunteer Rescue Association. It is a founding member of the Australian Ski Patrol Association and through it is affiliated with the Federation Internationale des Patrouilles de Ski (FIPS). Joining the patrol has many benefits, not the least of which is helping people who are in need. Some of the benefits can include:

- On hill accommodation at discounted rates
- No lift charges for skiing whilst on patrol as a trainee
- Able to store your equipment on the mountain
- On-hill bases from which to ski and board
- Subsidised Nationally-recognised First-aid courses
- Free on-mountain skills development and training
- Discounts on equipment
- Subsidised all-weather uniforms
- Free access to the Kosciuszko National Park
- Free Sydney and Canberra based training sessions
- Ability to car-share for transport to and from the snow
- Free transport on the Ski Tube Railway
- Social functions and barbeques

Giving up your time to train and then patrol is a commitment that is valued and does take effort and perseverance. This is a volunteer role (which can turn into a paid job) that allows you to have fun while you hone your work, sport and life skills. Skills like: teamwork, leadership, self-management under stress, advanced skiing and snowboarding; attainment of the highest level of Nationally recognised first-aid training in Australia; enjoyment of the camaraderie of skiing and boarding with some of the best skiers and boarders in the country.

Requirements

- Be over 18 years of age
- Have a current first aid certificate
- Ski or board under control everywhere on the mountain (at least Ski School Level 6)
- Have the right service attitude
- Be able to commit the significant time required for training (15 to 20 days per year for two seasons or whilst training)

Steps to becoming a Ski Patroller

1. You've already achieved this – show an interest in joining the patrol and find out about what it means to be a ski patroller
2. Ski with a Ski Patroller to get a Prequalification Ski or Boarding Competency Certificate (this is free, and the form is available from the Perisher Ski Patrol website - www.nsw-ski-patrol.org.au/perisher)
3. Complete the Application Form and mail it to the Secretary. Attach two passport size photos and a copy of your current AQTF Accredited First-Aid Certificate (the Application Form is available from the Perisher Ski Patrol website - www.nsw-ski-patrol.org.au/perisher)
4. Book a **Ski & Board Clinic and Assessment** by completing the form and enclosing the required fee. (the Booking Form is available from the Perisher website) These clinics only take place on a limited number of days during the season, so check the application form for the dates. Also, it pays to get in early in the season so you can take advantage of training days during the best skiing times.
5. Attend the Clinic and Assessment Day.

6. Once you've passed the assessment you will be asked to pay the joining fee and be issued ID passes, building access card, member password access to the website, National Park passes, Ski Tube Pass and Trainee Workbook.
7. The following day is Induction Sunday where you will also be introduced to the daily routine and be shown around the Headquarters and Bump Stations. The Induction Checklist is located in the Trainee Workbook. Enjoy your skiing or boarding. Welcome to the Patrol as a Trainee.
8. Attend whenever you are able during the balance of the season where you will work with a Patroller each day to complete the training. You should complete your training in about two seasons or less depending on the number of days you put in. The Trainee Workbook details the program.
9. Over the summer, the Australian Ski Patrol Association (ASPA) conducts an Advanced Emergency Care Program (on three weekends in late March and April). You will need to qualify in this course to progress to Probationary Patroller.
10. Having completed the training program, you will then become a Probationary Patroller, with full voting rights and full access to all Patrol benefits.

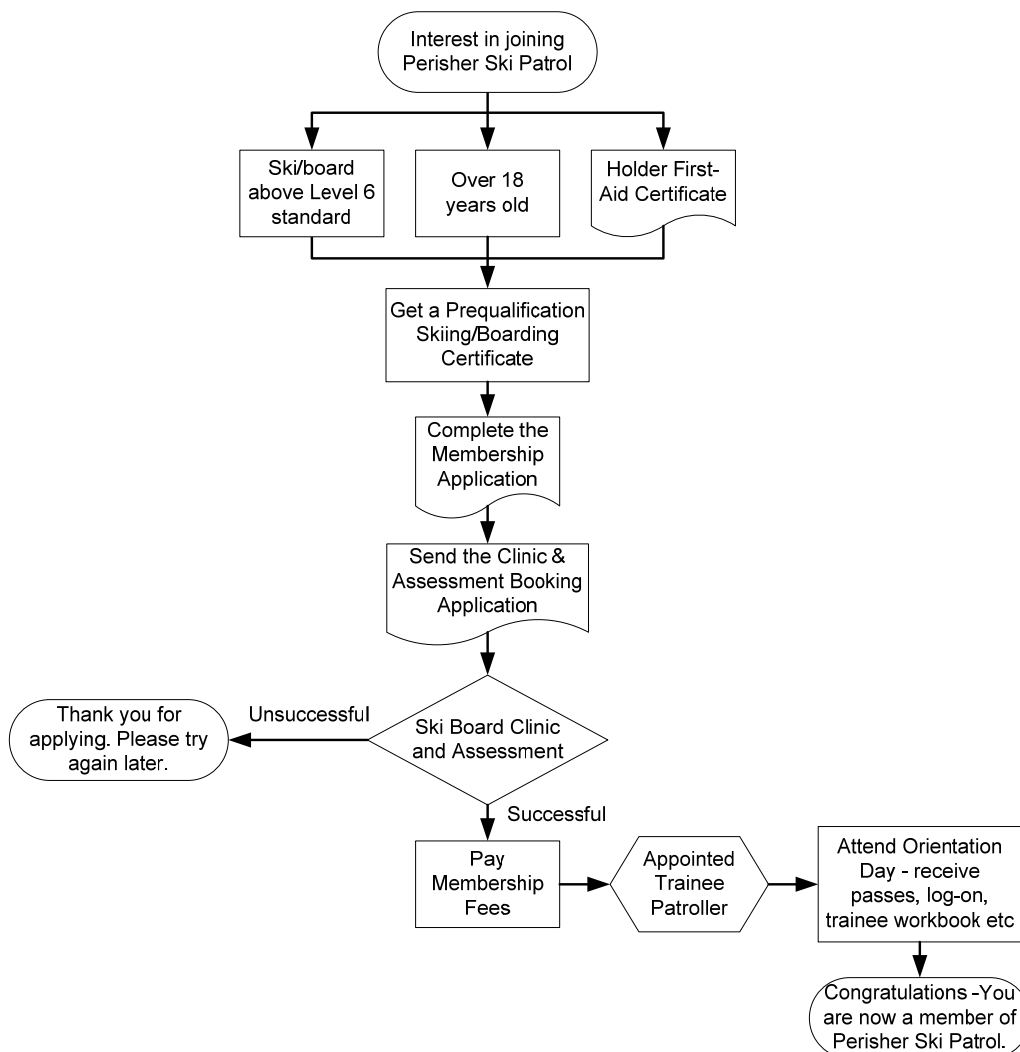


Figure 1 - Joining the Patrol Schematic

Role of a Ski Patroller

- provide first-aid assistance to injured visitors to the snow
- evacuate casualties to medical assistance from locations on the snow
- prepare/repair areas (including sign-posting and warning marks) to mitigate risk of injury
- provide assistance to skiers and boarders in need
- evaluate the risk of injury and dangers to skiers & boarders, closing off high risk areas



- warn skiers and boarders of risks
- conduct training in first-aid and mountain awareness
- evacuate lifts (when necessary)
- conduct search and rescue operations
- open and close lifts
- sweep mountain trails and slopes to ensure visitors are safely off the mountain at the end of the day

Becoming a Ski Patroller can be challenging and exhilarating. The training is essential to maintain the high standards and professionalism that the public has come to expect of the Ski Patrol. It also aids in ensuring your safety in sometimes hazardous and difficult circumstances. Most people find Ski Patrolling a very enjoyable and rewarding past-time, from which they derive a large amount of personal satisfaction. It involves the acceptance of responsibility; and constant vigilance to maintain our professional image, which is highly visible to the public.

Should you require any more information, please do not hesitate to contact a Recruitment Liaison Officer:

Mark Bingham
(Mob): 0408 237 908
Email: recruitment@nsw-ski-patrol.org.au

Roland Flesch
(Mob): 0402 671 121
Email: rollyf@unwired.com.au

All written correspondence should be addressed to:

The Recruitment Officer
Perisher Ski Patrol
P.O. Box 4702
Sydney NSW 2001